



Xenon™ Ultra 1962x Series

Cordless Area-Imaging Scanner and Charge Bases

Scanner Family: 1962h, 1962g, 1962li

Quick Start Guide

Agency Model: 1962

Note: Refer to your User Guide for information about cleaning your device.

Out of the Box

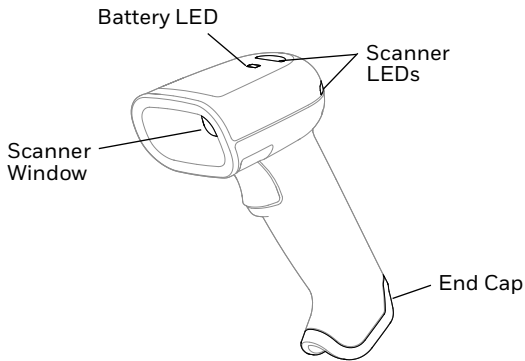
Make sure that your shipping box contains these items:

- Xenon Ultra 1962x series scanner
- Charge/Communication Base
- Power Supply
- Communication Cable
- Product Documentation

If you ordered accessories for your scanner, verify that they are also included with the order. Be sure to keep the original packaging in case you need to return the scanner for service.

Features

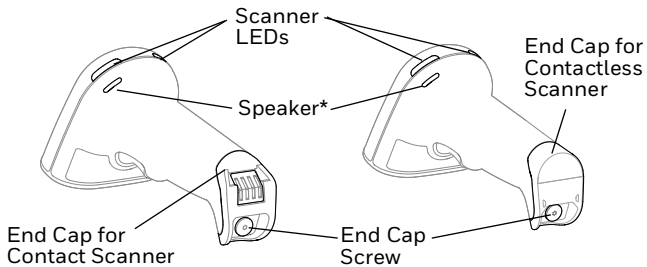
Front



Back

Contact

Contactless



* Only applies to 1962g/1962li.

About the Battery/Battery-Free Supercapacitor

The scanner ships with a 3.635 VDC, 12 watt-hour Li-ion battery or battery-free supercapacitor manufactured for Honeywell International, Inc.



Before you attempt to use, charge or replace the battery in the device, carefully read all labels, markings and product documentation provided in the box or online at sps.honeywell.com. To learn more about Battery Maintenance for Portable Devices, go to honeywell.com/PSS-BatteryMaintenance.

Avant d'essayer d'utiliser, de charger ou de remplacer la batterie de l'appareil, lisez attentivement toutes les étiquettes, marquages et documentation du produit fournis dans la boîte ou en ligne à sps.honeywell.com. Pour en savoir plus sur l'Entretien de Batteries pour Appareils Portables, consultez-le honeywell.com/PSS-BatteryMaintenance.



We recommend use of Honeywell Li-ion battery packs. Use of any non-Honeywell battery may result in damage not covered by the warranty.

Nous recommandons l'utilisation de batteries Li-ion de la marque Honeywell. L'utilisation d'une batterie d'un autre fabricant est susceptible de provoquer des dommages non couverts par la garantie.



Ensure all components are dry prior to placing the battery in the computer. Mating wet components may cause damage not covered by the warranty.

Assurez-vous que tous les composants sont secs avant d'insérer la batterie dans l'ordinateur. L'insertion de composants humides risque de provoquer des dommages non couverts par la garantie.

Charge the Scanner

Charge the battery/battery-free supercapacitor before using the scanner for the first time with a Xenon Ultra CCB until the battery LED is green.

Xenon Ultra 1962x series scanners are designed for use with Xenon Ultra charging accessories. For more information, see the Xenon Ultra Accessories User Guide available for download at sps.honeywell.com.

Battery Status LED

The Battery LED on the top of the scanner indicates battery percentage.

LED Status	Charge Level	Battery-Free Supercapacitor Voltage
Green	100-70%	4501-5200
Amber	69-31%	3601-4500
Red	30-6%	3001-3600
Flashing Red	5-0%	0-3000

Scanner Status LED

The Scanner LED on the top and side of the scanner indicates communication and scanning status.

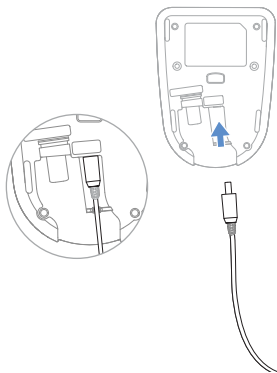
LED Status	Normal Operation	Menu Operation
Green Flash	Successful communication or linking	Successful menu change
Red Blinking	Failed Communication	Unsuccessful menu change

Connecting the Scanner

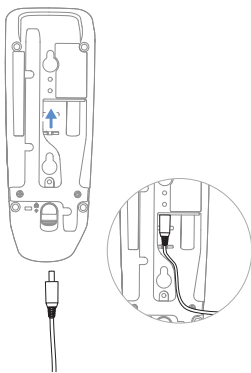
Note: If you are charging the scanner using the USB cable, the current available for charging is reduced and charge times are increased. Charging via the power supply or the BC1.2 charge port is faster.

1. Plug the power supply in the bottom of the base.

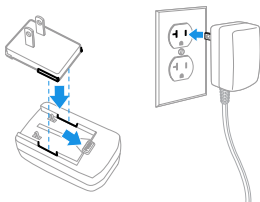
Presentation CCB



Horizontal CCB

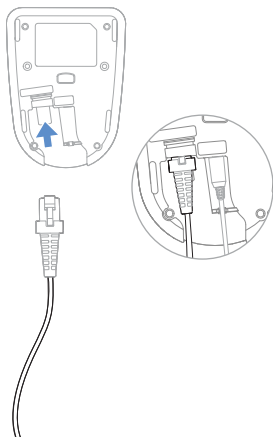


2. Plug the power supply into a standard wall outlet.

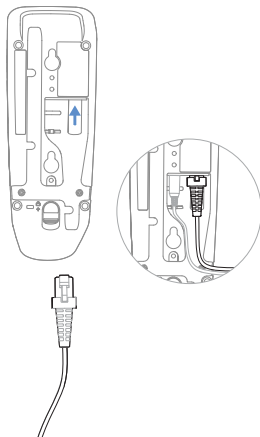


3. Plug the communication cable in the bottom of the base.

Presentation CCB

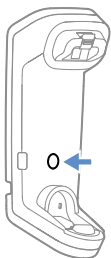
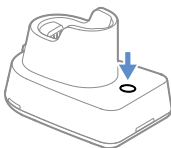


Horizontal CCB



4. Plug the communication cable to the host.
5. Place the scanner into the base. The scanner will automatically link to the base.

Find My Button



The Find My button on the base is used to page your scanner. When the scanner is out of the base, press the button once to make the scanner beep so you can locate it. Press the scanner's trigger to stop the beeping.

Reading Techniques

The view finder projects an aiming beam that should be centered over the barcode, but it can be positioned in any direction for a good read.



Standard Product Defaults

The following barcode resets all standard product default settings.



Standard Product Defaults

USB Serial

Scan the following code to program the scanner to emulate a regular RS232-based COM Port. If you are using a Microsoft® Windows® PC, you will need to download a driver from the Honeywell website (sps.honeywell.com). The driver will use the next available COM Port number. Apple® Macintosh computers recognize the scanner as a USB CDC class device and automatically use a class driver.



USB Serial

Note: No extra configuration (e.g., baud rate) is necessary.

USB PC Keyboard

Scan the following code to program the scanner for a USB PC Keyboard.



USB PC Keyboard

Keyboard Country

Scan the appropriate country code below to program the keyboard layout for your country or language. By default, national character replacements are used for the following characters: # \$ @ [\] ^ _ { | } ~ Refer to the ISO 646 Character Replacements chart in your User Guide to view the character replacements for each country.



USA (Default)



Denmark



France



Great Britain



Norway



Belgium



Finland



Germany/Austria



Italy



Spain



Switzerland

Note: For a complete list of country codes, see the User Guide for your product.

Trigger

The following barcodes will allow you to use the scanner in **Manual Trigger - Normal Mode** (need to press the trigger to read) or **Presentation mode** (the scanner is activated when it “sees” a barcode).



Manual Trigger - Normal
(Default)



Presentation Mode

Streaming Presentation

When in Streaming Presentation mode, the scanner leaves the scan illumination on all the time and continuously searches for barcodes.



Streaming Presentation Mode

Activate Defaults and Add CR Suffix

To reset to custom/factory default settings and add a carriage return after the barcode, scan the **Activate Defaults and Add CR Suffix** barcode.



Activate Defaults and Add CR Suffix

Suffix

If you want a carriage return after the barcode, scan the **Add CR Suffix** barcode. To add a tab after the barcode, scan the **Add Tab Suffix** barcode. Otherwise, scan the **Remove Suffix** barcode to remove the suffixes.



Add CR Suffix



Add Tab Suffix



Remove Suffix

Add Code ID Prefix to all Symbologies

Scan the following barcode if you wish to add a Code ID prefix to all symbologies at once.



Add Code ID Prefix To All Symbologies
(Temporary)

Note: For a complete list of Code IDs, see the User Guide for your product.

Function Code Transmit

When this selection is enabled and function codes are contained within the scanned data, the scanner transmits the function code to the terminal. Charts of these function codes are provided in your User Guide. When the scanner is in keyboard wedge mode, the scan code is converted to a key code before it is transmitted.



Enable
(Default)



Disable

Healthcare

Note: *The following settings are only supported on 1962h models.*

Epic

Scan the following barcode to configure your device to communicate with an Epic software application.



EMR Application

After scanning this code, you must put the scanner into the base or scan the linking barcode on the base or Access Point to relink your scanner.

Meditech®

Scan the following barcode to configure your device to communicate with a Meditech software application.



Meditech Application

After scanning this code, you must put the scanner into the base or scan the linking barcode on the base or Access Point to relink your scanner.

Quiet Operations

The following codes configure the scanner and base to quiet modes for scanning that does not disturb resting patients.

Silent Mode with Flashing LED

Scan the following barcode to completely silence the base and scanner. When a barcode is scanned, the LED and aimer flash 5 times. Green indicates a good scan, red indicates a bad scan.



Silent Mode with Flashing LED

Silent Mode with Long LED

Scan the following barcode to completely silence the base and scanner. When a barcode is scanned, the LED and aimer remain solidly lit for 1 second. Green indicates a good scan, red indicates a bad scan.



Silent Mode with Long LED

Very Low Beeper (Nighttime Mode)

The following barcode silences the base, and sets the scanner for a very low beep when reading barcodes. After scanning this code, the base beep, base and scanner power up beep, and scanner linking sounds are all silenced. When a barcode is scanned, the scanner emits a very soft beep.



Nighttime Mode

Low Beeper (Daytime Mode)

Scan the following barcode to set all sounds to on, but at a low volume. The scanner beep, base beep, base and scanner power up beep, and scanner linking sounds are all set to low volume.



Daytime Mode

Support

To search our knowledge base for a solution or to log into the Technical Support portal and report a problem, go to honeywell.com/PSStechnicalsupport.

Product Documentation

Product documentation is available at sps.honeywell.com.

Limited Warranty

For warranty information, go to sps.honeywell.com and click **Support > Warranties**.

Patents

For patent information, see www.hsmpats.com.

Disclaimer

Honeywell International Inc. (“HII”) reserves the right to make changes in specifications and other information contained in this document without prior notice, and the reader should in all cases consult HII to determine whether any such changes have been made. HII makes no representation or warranties regarding the information provided in this publication.

HII shall not be liable for technical or editorial errors or omissions contained herein; nor for incidental or consequential damages resulting from the furnishing, performance, or use of this material. HII disclaims all responsibility for the selection and use of software and/or hardware to achieve intended results.

This document contains proprietary information that is protected by copyright. All rights are reserved. No part of this document may be photocopied, reproduced, or translated into another language without the prior written consent of HII.

Copyright © 2024 Honeywell Group of Companies. All rights reserved.